






**2001/281 Elizabeth Street Sydney NSW**

3  3  1 

Capturing breathtaking views over Hyde Park, St Mary's Cathedral, and the city skyline, this stunning 3-bedroom apartment is situated on the 20th floor in the highly sought after 'Regency Hyde Park Building'.

**Type** : Apartment

**View** : <https://www.eliasproperty.com.au/lease/nsw/sydney-city/sydney/residential/apartment/8036560>

Ideally located in the heart of Sydney's CBD, only steps away from Museum Railway Station, Darling Harbour, Pitt St Mall, Westfield Shopping Centre + nearby cafe's & restaurants.

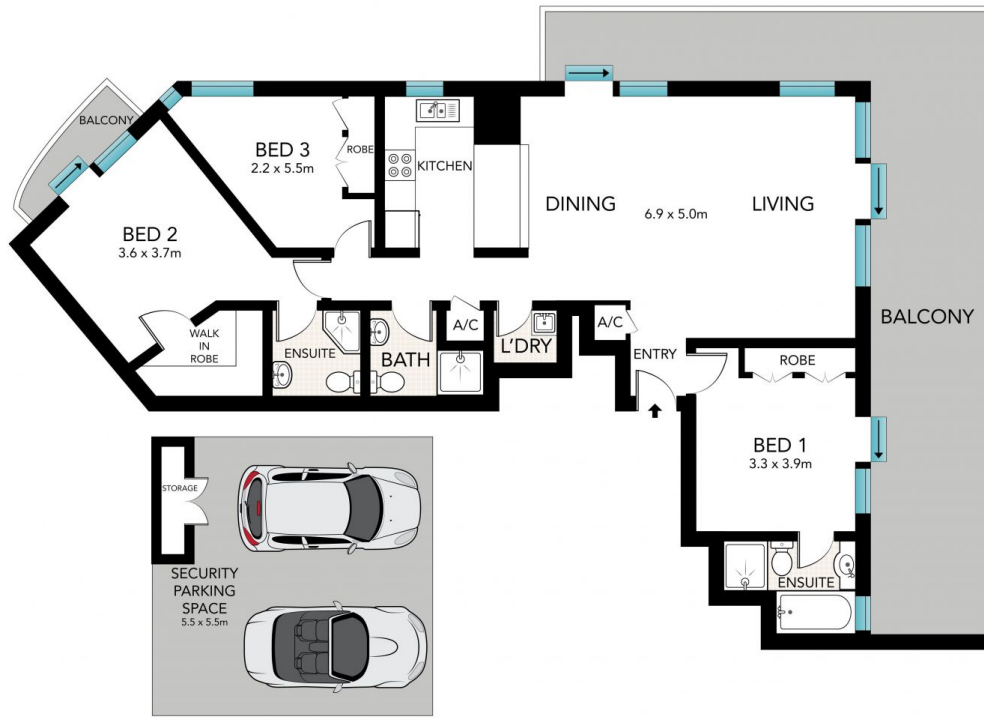
Features include

- Freshly painted with brand new flooring through-out
- Combined living & dining with spectacular views

[For full version visit the website](#)



**Candyce Crowley**  
**0478585169**



Total Area:  
157sqm



This floor plan was prepared by WWW.CRYPINGOUTLOUD.COM.AU for illustration purposes only. This document does not constitute any part of an offer or contract. Dimensions are approximate only. Copyright © 2017 Crying Out Loud. All Rights Reserved.

2001/281 Elizabeth Street, Sydney