



61 Roseville Avenue Roseville NSW

5 3 2

Magnificent Family Home | Heart of Roseville

This classic, character filled family home is perfectly situated within the heart of Roseville. Located within a short walking distance to Local Schools, Child Care Centres, Cafes, Parks & Roseville Train Station.

Only 5 minutes drive to Westfield Chatswood, Chase & Major Motorways.

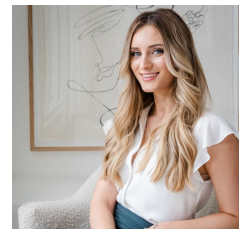
Features Include:

- Bonus study room
- 5 Large bedrooms, all with built-ins & en-suite to master
- Bright kitchen with gas cooking, dishwasher & storage
- Grand formal lounge room with open fireplace

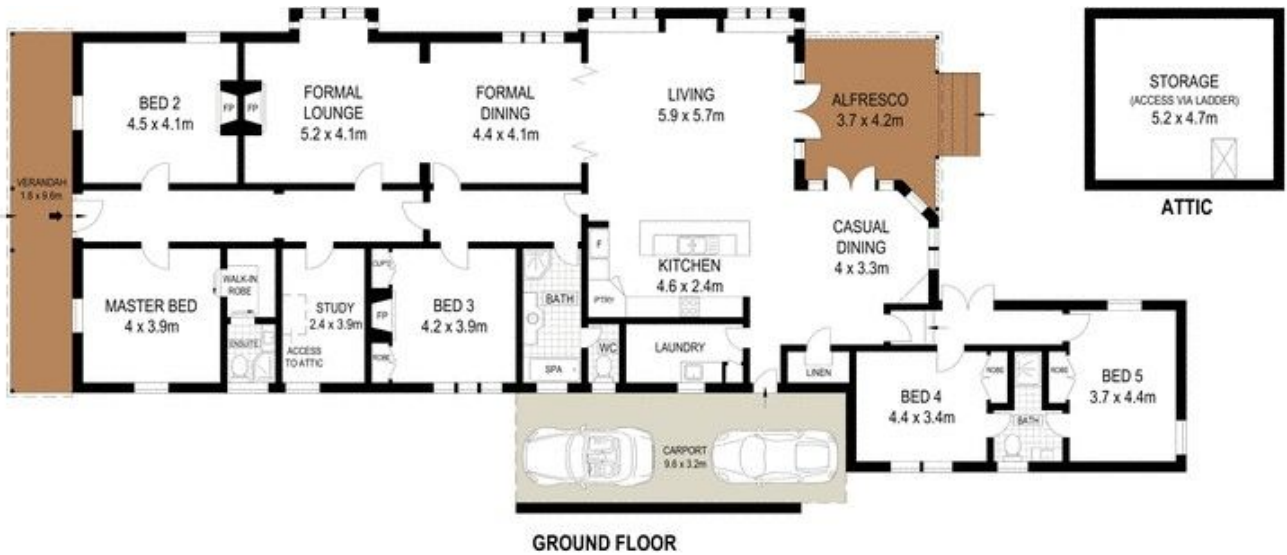
View : <https://www.eliasproperty.com.au/lease/nsw/north-shore-upper/roseville/residential/house/7902333>



Nadim Wehbe
0425 339 166



Candyce Crowley
0478585169



0 1 2 3 4 5

Scale in metres. Indicative only. Dimensions are approximate. All information contained herein is gathered from sources we believe to be reliable. However we cannot guarantee its accuracy and interested persons should rely on their own enquiries

61 Roseville Avenue, Roseville

