



89 William Edward Street Longueville NSW

4 2 2

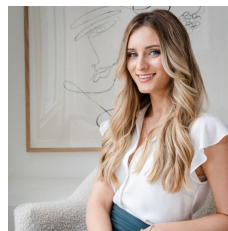
Spacious 4 bedroom Californian Style Bungalow with lovely water views overlooking Tamborine Bay is now available.

This home is located in the heart of Longueville. Walking Distance to public transport and a stone throw away from Kingsford Smith Oval.

The home has a fully fenced Yard and also offers the following;

- * Modern kitchen with dishwasher
- * Separate Informal Lounge and Dining Areas +
- * Separate Formal Lounge and Dining
- * Floorboards throughout Living areas
- * 4 bedrooms + Study Room
- * Huge walk in robe off main bedroom

View : <https://www.eliasproperty.com.au/lease/nsw/north-shore-lower/longueville/residential/house/7305284>



Candyce Crowley
0478585169



Nadim Wehbe
0425 339 166