



## 13 Moss Street West Ryde NSW

5 2 2

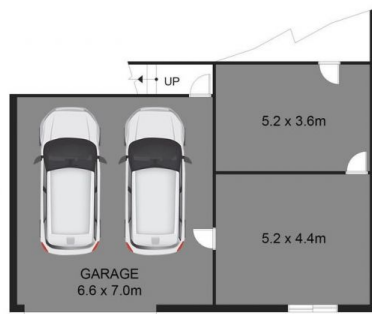
Positioned on the high side of a quiet leafy street and set on approximately 620sqm, this large family brick home has been architecturally designed with grand proportions in mind. Featuring:

- + High cathedral ceilings with airy open-plan living spaces that allow natural light throughout lounge and dining areas of the home
- + Rear North facing aspect
- + Polished timber floorboards
- + 5 generous sized bedrooms, Master with en-suite and built-ins

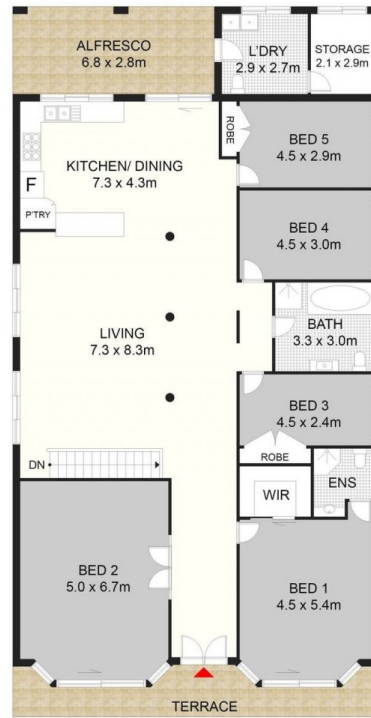
**View :** <https://www.eliasproperty.com.au/sale/nsw/northern-suburbs/west-ryde/residential/house/7145768>



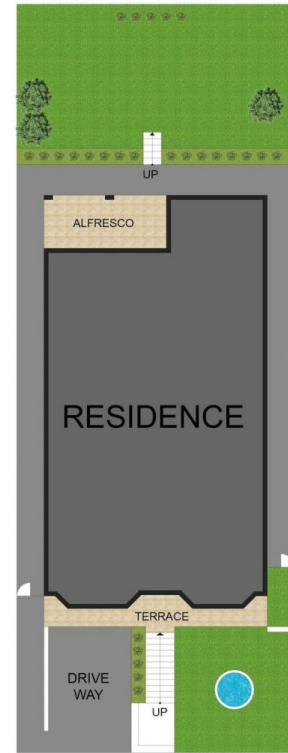
**Ella Elias**  
02 9807 3688



BASEMENT



ENTRY FLOOR



SITE PLAN

13 MOSS STREET, WEST RYDE, NSW 2114

Dimensions are approximate. All information contained is gathered from sources we believe to be reliable. However we cannot guarantee its accuracy and interested persons should rely on their own enquiries.